

# KNOWLEDGE SHARING: PROOF OF CONCEPT SUSTAINABILITY DATA FRAMEWORK



AUSTRALIAN COTTON SUSTAINABILITY FRAMEWORK  
**PLANET. PEOPLE. PADDOCK.**



The complicated world of sustainability reporting for agrifood supply chains has changed significantly in the past couple of years. As a result, the Australian cotton is revamping its **PLANET PEOPLE PADDOCK** sustainability data framework to directly align the reporting standards and guidance we think customers of Australian food and fibre are most likely to use.

The **PURPOSE** of this work is two-fold:

1. Provide more insightful data to **improve decision-making** for **growers**, the **cotton industry**, and other stakeholders - **especially customers**.
2. Provide **a scientifically robust narrative** to mitigate the risk of sustainability being used as a trade barrier.

The intended **OUTCOME** of this work is **a single sustainability data framework that can be used for multiple tasks** including:

Easy and transparent **customer access to sustainability data** they need

Provide industry-scale **natural and social capital assessments**



Explore feasibility of industry **Science Based Targets**

Explore feasibility of industry **Integrated Reporting**

The project is designed to be **SCALABLE AND REPEATABLE ACROSS ALL AGRICULTURE SECTORS**. It provides a **proof-of-concept for other Australian agricultural sustainability frameworks and businesses** to adopt and adapt for their own needs, if they wish, to **consistently measure changes in environmental, social and economic capital across sectors**.

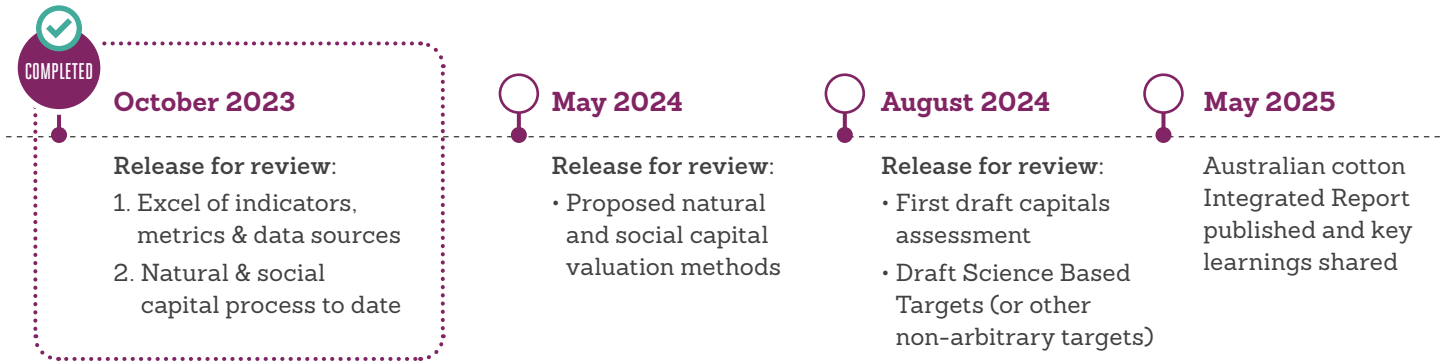
- Progress and learnings from the project will be regularly shared with other industries, so we can work towards **nationally consistent indicators, credible and robust reporting, reduced duplication, and increased awareness** and support from our farmers.
- Decisions and assumptions will be documented to provide consistency for future assessments by cotton and other industries, and to provide defensible justifications of decisions.

[CLICK HERE](#)

For the Terms of Reference of an **AASF natural and social capital activity group** initiated by the cotton industry to share learnings.

- Feedback from first Activity Group milestone meetings has been incorporated, where relevant, into the outputs shared on the next page.

# KNOWLEDGE SHARING: MILESTONE OUTPUTS



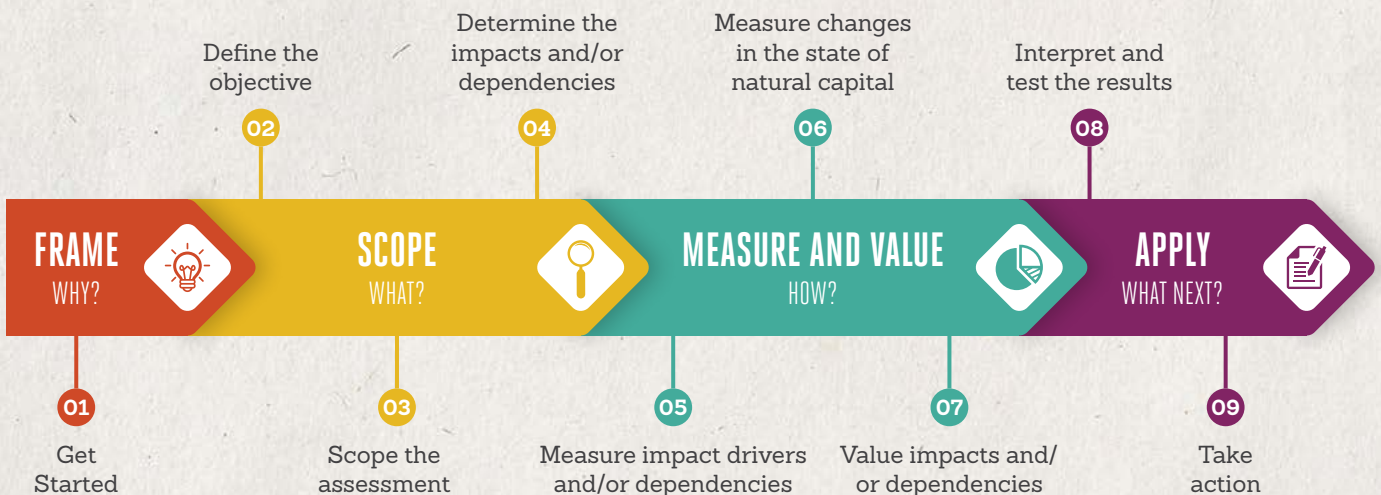
## WHAT WE'VE SHARED

**01** A **revamped sustainability data framework** with headings, indicators and metrics aligned to the standards we expect food and fibre customers will increasingly use. This aims to make it easier for customers to “Buy Australian” and give industry richer data to make more informed decisions.

[CLICK HERE](#) For the draft Excel sustainability data framework.

	Extent	Impacts	Dependencies

**02** Progress to date on work to **assess natural and social capital**. This has followed the first four of nine steps outlined by the Capitals Coalition methodology. **Water** availability and use, **soil** quality and degradation, **land use change** and **human capital** have been identified as priorities for assessing the value of.



[CLICK HERE](#) For a summary slide deck of capitals assessment process.